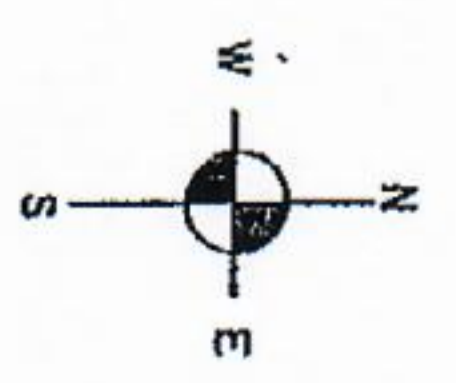


- COUNTY LINE ---
- CORPORATE LIMITS - - - -
- STATE TRUNKLINE =====
- COUNTY PRIMARY -----
- COUNTY LOCAL #####
- ADJACENT COUNTY =====
- CITY OR VILLAGE =====
- STREET =====

PRIMARY ROAD SYSTEM IS 10.05 MILES
 LOCAL ROAD SYSTEM IS 33.43 MILES

I HEREBY CERTIFY THAT THE
 ROADS SHOWN HEREON BY SYMBOL OR
 IN RED AS PRIMARY ROADS AND THOSE
 SHOWN HEREON BY SYMBOL OR IN
 GREEN AS LOCAL ROADS ARE IN USE
 AND ARE UNDER THE JURISDICTION
 OF THE COUNTY ROAD COMMISSION.

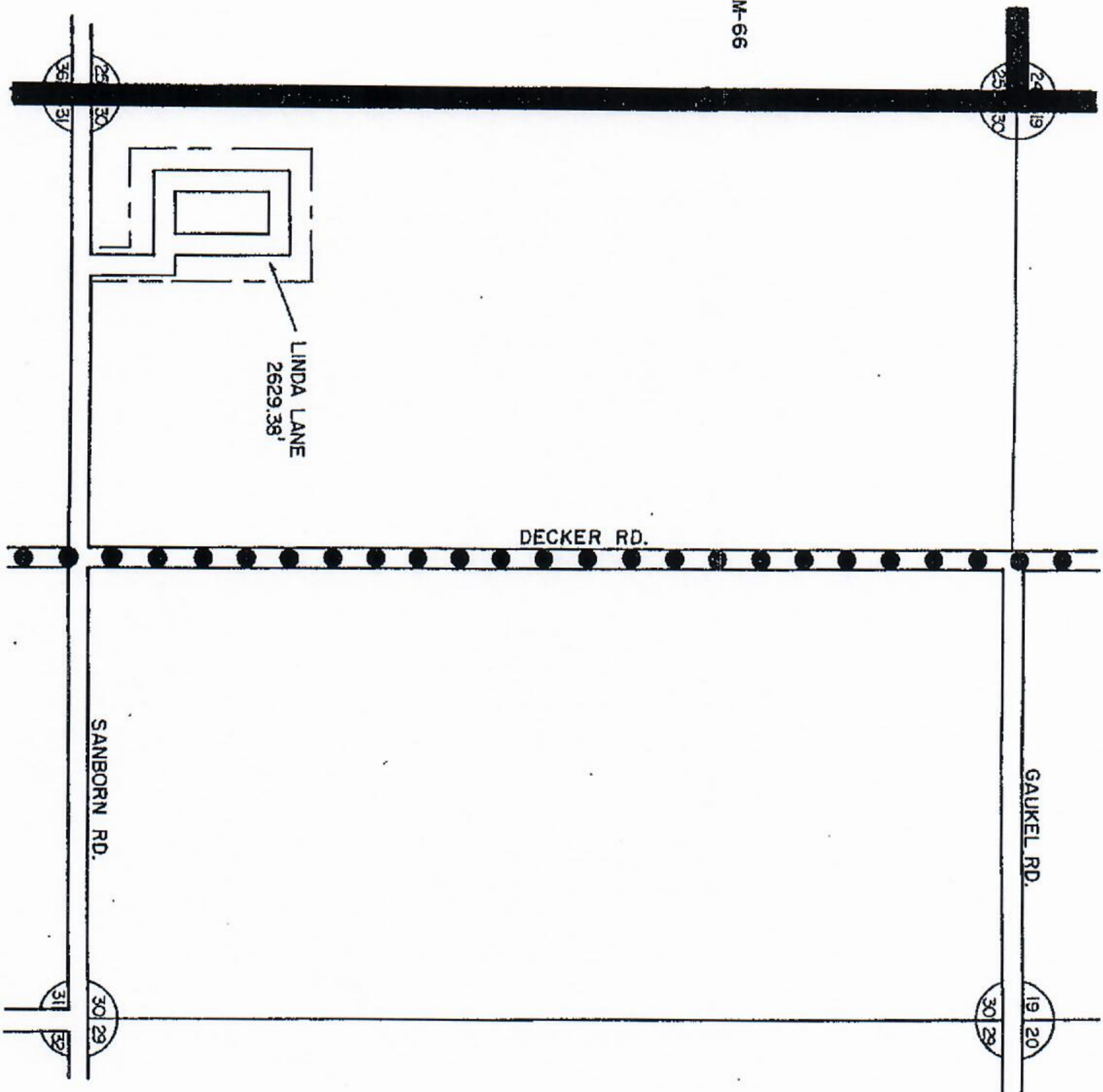
CHAIRMAN _____ DATE _____



SCALE 0 1/2 1 MILE
 ONE INCH EQUALS 3000'

FOREST TWP
 T23N - RTW
 MISSAUKEE CO.

13	14	15	16
9	10	11	12
5	6	7	8
1	2	3	4



SHAH ACRES

LEGEND

COUNTY LINE
 CORPORATE LIMITS
 STATE TRUNKLINE
 COUNTY PRIMARY
 COUNTY LOCAL
 ADJACENT COUNTY
 CITY OR VILLAGE
 STREET:



TOTAL FEET 2629.38 EQUALS .50 MILES

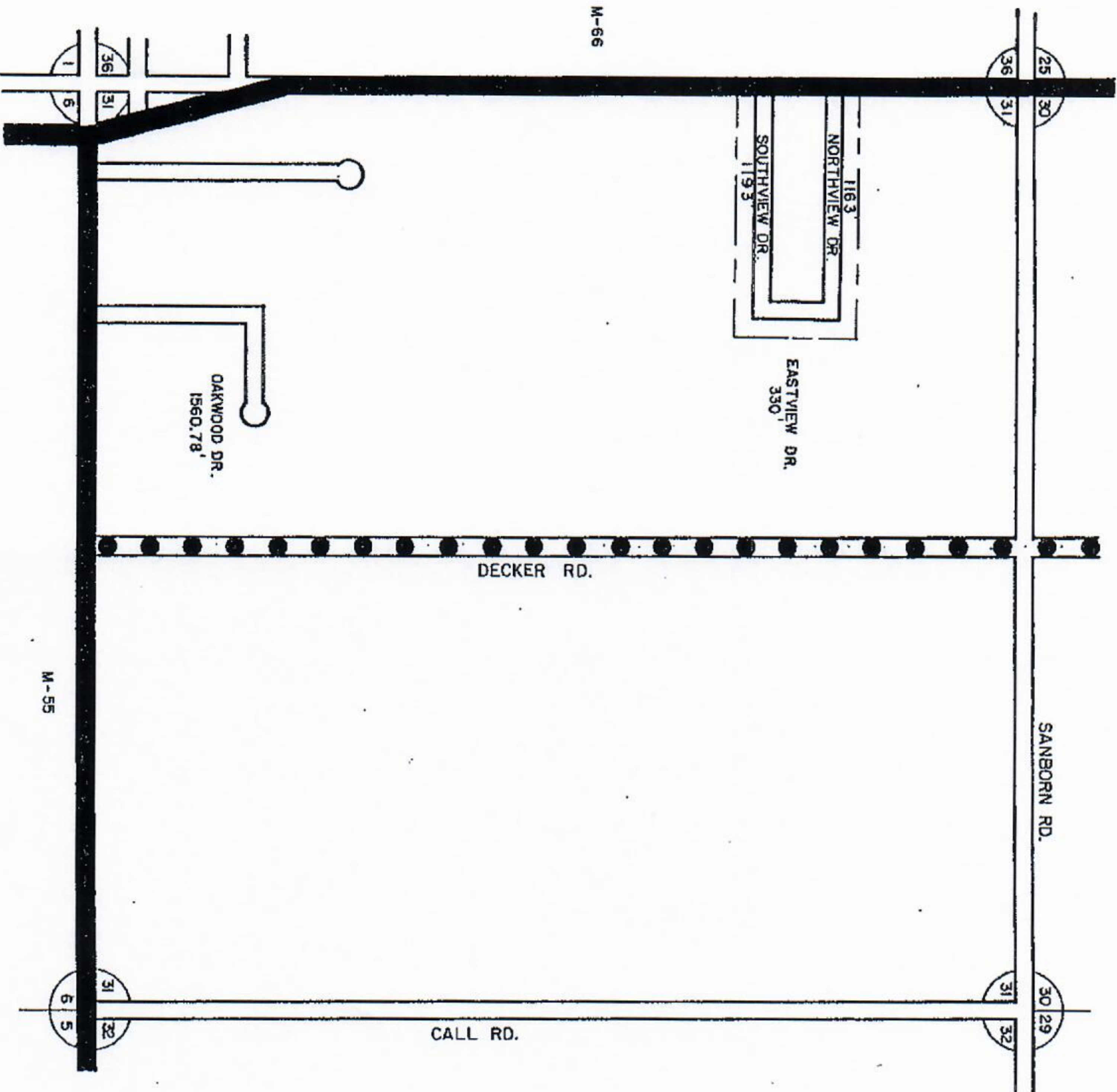
I, HEREBY CERTIFY THAT THE ROADS SHOWN HEREON BY SYMBOL, AS LOCAL ROADS ARE IN USE AND ARE UNDER THE JURISDICTION OF THE COUNTY ROAD COMMISSION.

CHAIRMAN _____ DATE _____



TOWNSHIP _____ - FOREST
 SECTION 30 T23N R7W
 COUNTY MISSAUIKEE

SCALE 0 600 1200 FEET
 ONE INCH = 600'



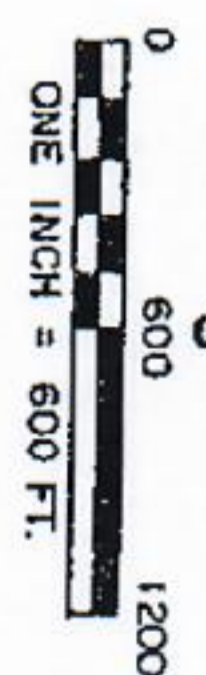
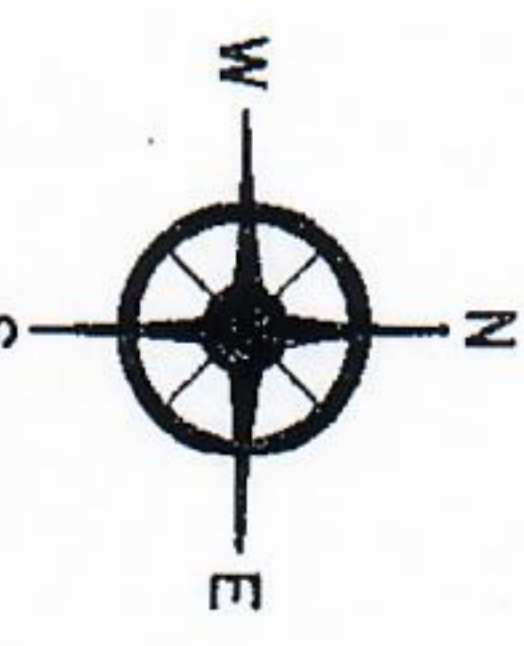
TAFEL GARDENS

COUNTY LINE LIMITS
 STATE TRUNKLINE
 COUNTY PRIMARY
 COUNTY LOCAL
 ADJACENT COUNTY
 CITY OR VILLAGE
 STREET

TOTAL FEET 42467 EQUALS .80 MILES

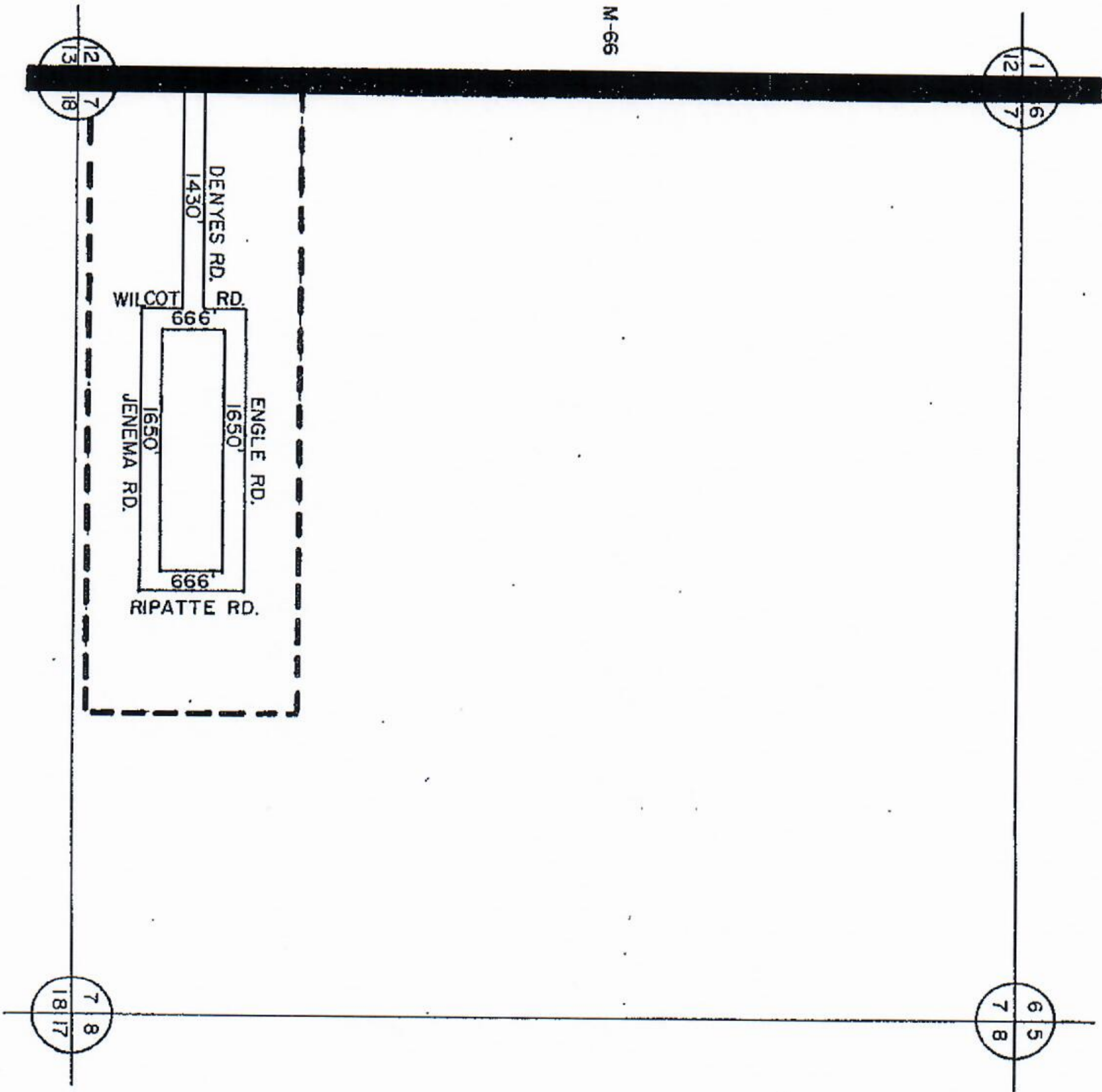
I HEREBY CERTIFY THAT THE ROADS SHOWN HEREON BY SYMBOL AS LOCAL ROADS ARE IN USE AND ARE UNDER THE JURISDICTION OF THE COUNTY ROAD COMMISSION.

CHAIRMAN _____ DATE _____



TOWNSHIP FOREST
 SECTION 31 T23N R6W
 COUNTY MISSAUKEE

MISSAUKEE INDUSTRIAL PARK NO. 1



LEGEND

- COUNTY LINE
- CORPORATE LIMITS
- STATE TRUNKLINE
- COUNTY PRIMARY
- COUNTY LOCAL
- ADJACENT COUNTY
- CITY OR VILLAGE
- STREET

TOTAL FEET 6062 EQUALS 115 MILES

CHAIRMAN _____ DATE _____



SCALE 0 500 1200 FEET
One inch equals 600 feet

TOWNSHIP FOREST
SECTION 7 T. 23N R. 8W
COUNTY MISSAUKEE

M-66